



Jamie Lane

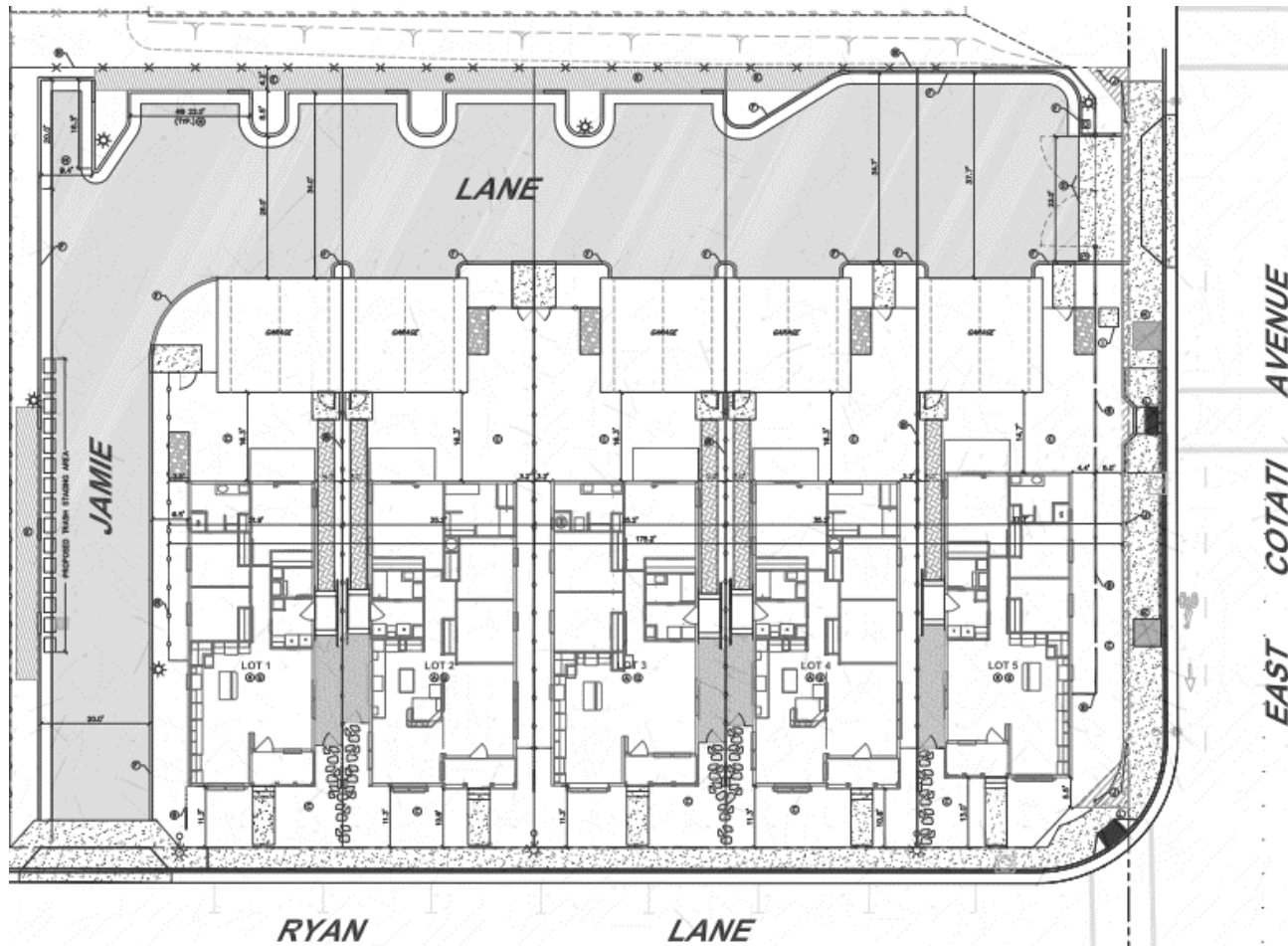
Sheena Kho
Credit Officer
skho@calhfa.ca.gov

Jamie Lane



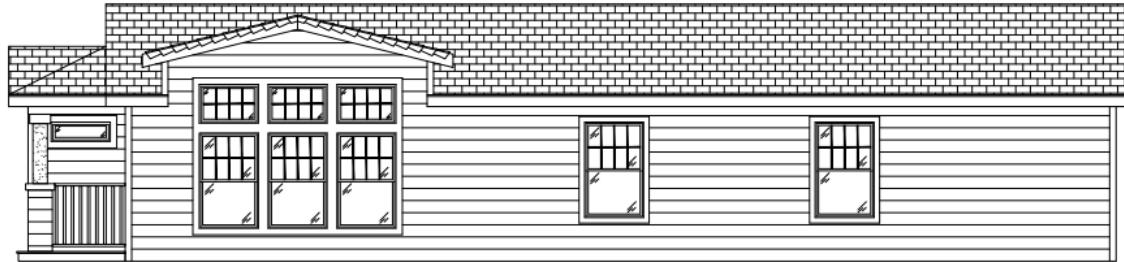
Subject Site Aerial Map

Jamie Lane

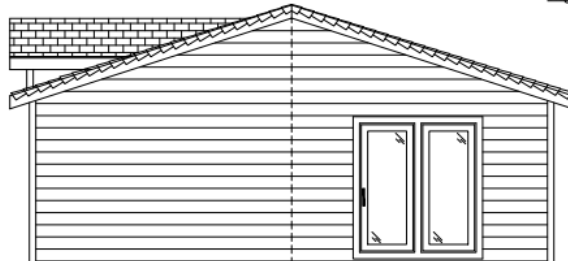


Proposed Site Plan

Jamie Lane



Right Elevation



Rear Elevation



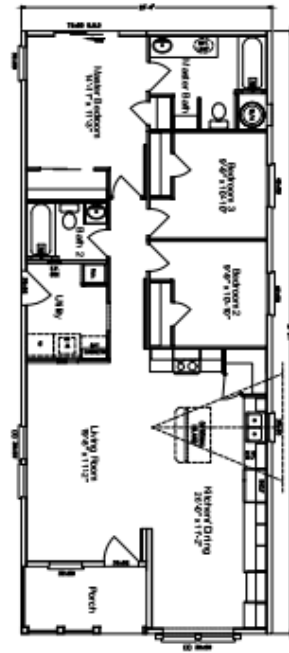
Front Elevation
4/12 Roof Pitch



Left Elevation

Typical Elevation

LOT 5



Floor Plans

Jamie Lane



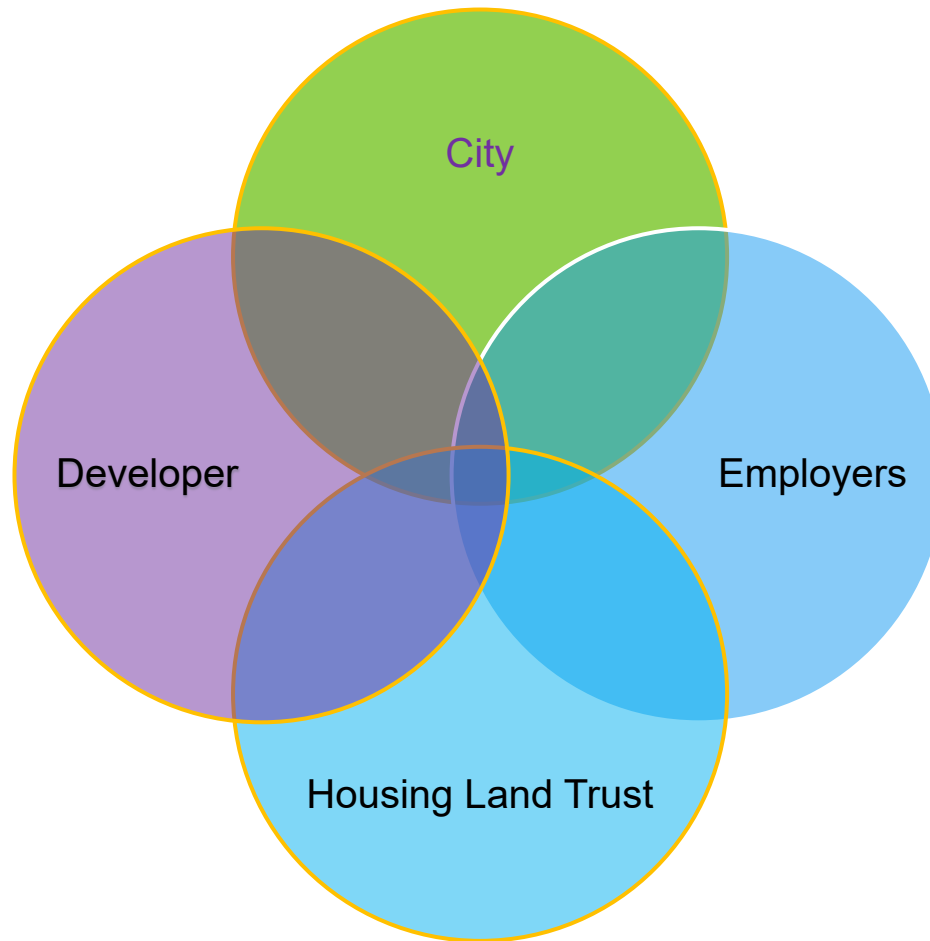
View of Subject Site from Southeast Corner

Jamie Lane

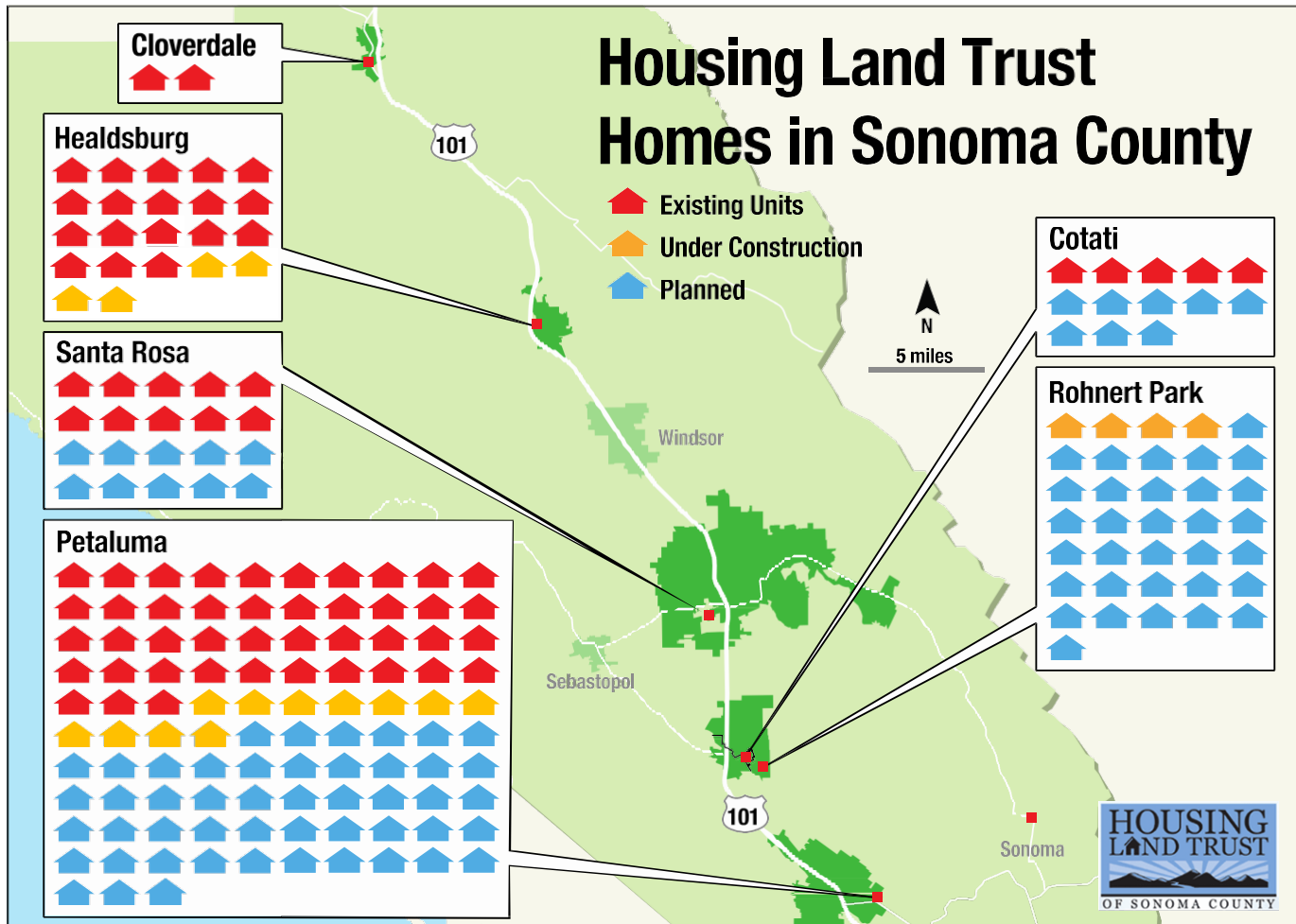


View of Subject Site from Southwest Corner

Partnerships



Housing Land Trust Homes in Sonoma County



In the Land Trust Option: *It's all about the paycheck, not the market*



2005 - 2008

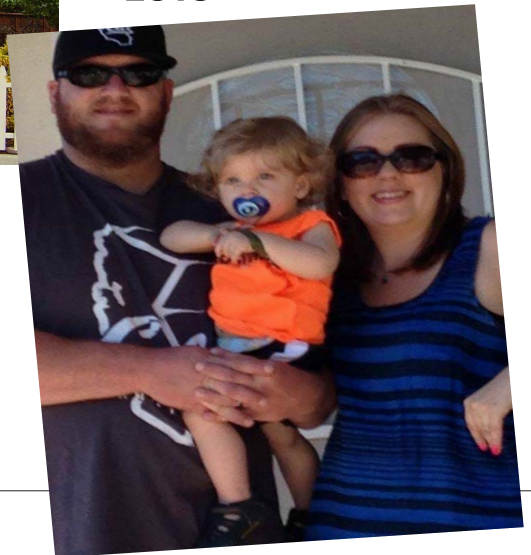


2008 - 2010



2010 - 2013

2013 -



**One House
Serving Four Families**



Pastor
 Teacher
 Outdoor School Manager
 Police Officer
 Junior Accountant 1
 Golf Professional
 Server
 Claims Service Senior Assoc
 Laborer
 Accounting Analyst
 Maintenance
 Home Salesman

Civil Engineering Tech
 DMV Coordinator
 Laborer
 Pastor
 Q.A. Analyst
 VP Editorial /Marcomm
 Financial and Outreach Coordinator
 Senior Financial Analyst
 Tile Setter
 Referral Coord. Dr. Office

City of Petaluma Utility Worker
 Test Engineer
 Asst. Treatment Operator
 Teacher
 Technical Account Manager
 Shipping Department
 GIS Analyst
 Teacher
 Waste Management Specialist
 Business Coordinator
 Psych Tech
 Water Resources technician

Radiologic Tech II
 City Carrier
 Manager
 Bottling
 Legal Secretary/paralegal
 Asst. Manager
 Financial Officer
 Teacher





California Housing Finance Agency
