

HOMEOWNERSHIP LOAN PORTFOLIO DELINQUENCY, REO, SHORT SALE and LOSS REPORT

Reconciled Loan Delinquency Summary All Active Loans By Insurance Type As of May 31, 2013

	Loan Count	Balance	% of Balance	DELINQUENCY RATIOS - % of Loan Count						Totals	
				Loan Count	30-Day	Loan Count	60-Day	Loan Count	90(+)-Day	Count	%
Federal Guaranty											
FHA	8,171	\$ 918,758,181	29.34%	404	4.94%	141	1.73%	544	6.66%	1,089	13.33%
VA	204	23,332,090	0.75%	6	2.94%	3	1.47%	15	7.35%	24	11.76%
RHS	82	14,690,038	0.47%	2	2.44%	0	0.00%	12	14.63%	14	17.07%
Conventional loans											
with MI											
CalHFA MI Fund	4,238	1,084,317,409	34.63%	147	3.47%	61	1.44%	446	10.52%	654	15.43%
without MI											
Orig with no MI	4,345	815,664,120	26.05%	103	2.37%	44	1.01%	271	6.24%	418	9.62%
MI Cancelled*	1,694	274,669,202	8.77%	37	2.18%	12	0.71%	68	4.01%	117	6.91%
Total CalHFA	18,734	\$ 3,131,431,040	100.00%	699	3.73%	261	1.39%	1,356	7.24%	2,316	12.36%

*Cancelled per Federal Homeowner Protection Act of 1998, which grants the option to cancel the MI with 20% equity.

Note: In accordance with CalHFA's policy, no trustee sale is permitted between December 15 and January 5 of any year without CalHFA's prior written approval.

Reconciled Loan Delinquency Summary All Active Loans By Loan Type As of May 31, 2013

	Loan Count	Balance	% of Balance	DELINQUENCY RATIOS - % of Loan Count						Totals	
				Loan Count	30-Day	Loan Count	60-Day	Loan Count	90(+)-Day	Count	%
30-yr level amort											
FHA	8,171	\$ 918,758,181	29.34%	404	4.94%	141	1.73%	544	6.66%	1,089	13.33%
VA	204	23,332,090	0.75%	6	2.94%	3	1.47%	15	7.35%	24	11.76%
RHS	82	14,690,038	0.47%	2	2.44%	0	0.00%	12	14.63%	14	17.07%
Conventional - with MI	2,152	487,484,240	15.57%	68	3.16%	26	1.21%	188	8.74%	282	13.10%
Conventional - w/o MI	5,366	933,201,066	29.80%	115	2.14%	43	0.80%	256	4.77%	414	7.72%
40-yr level amort											
Conventional - with MI	381	107,393,813	3.43%	16	4.20%	5	1.31%	42	11.02%	63	16.54%
Conventional - w/o MI	189	37,909,707	1.21%	7	3.70%	3	1.59%	14	7.41%	24	12.70%
5-yr IOP, 30-yr amort											
Conventional - with MI	1,705	489,439,356	15.63%	63	3.70%	30	1.76%	216	12.67%	309	18.12%
Conventional - w/o MI	484	119,222,548	3.81%	18	3.72%	10	2.07%	69	14.26%	97	20.04%
Total CalHFA	18,734	\$ 3,131,431,040	100.00%	699	3.73%	261	1.39%	1,356	7.24%	2,316	12.36%
<i>Weighted average of conventional loans:</i>				287	2.79%	117	1.14%	785	7.64%	1,189	11.57%

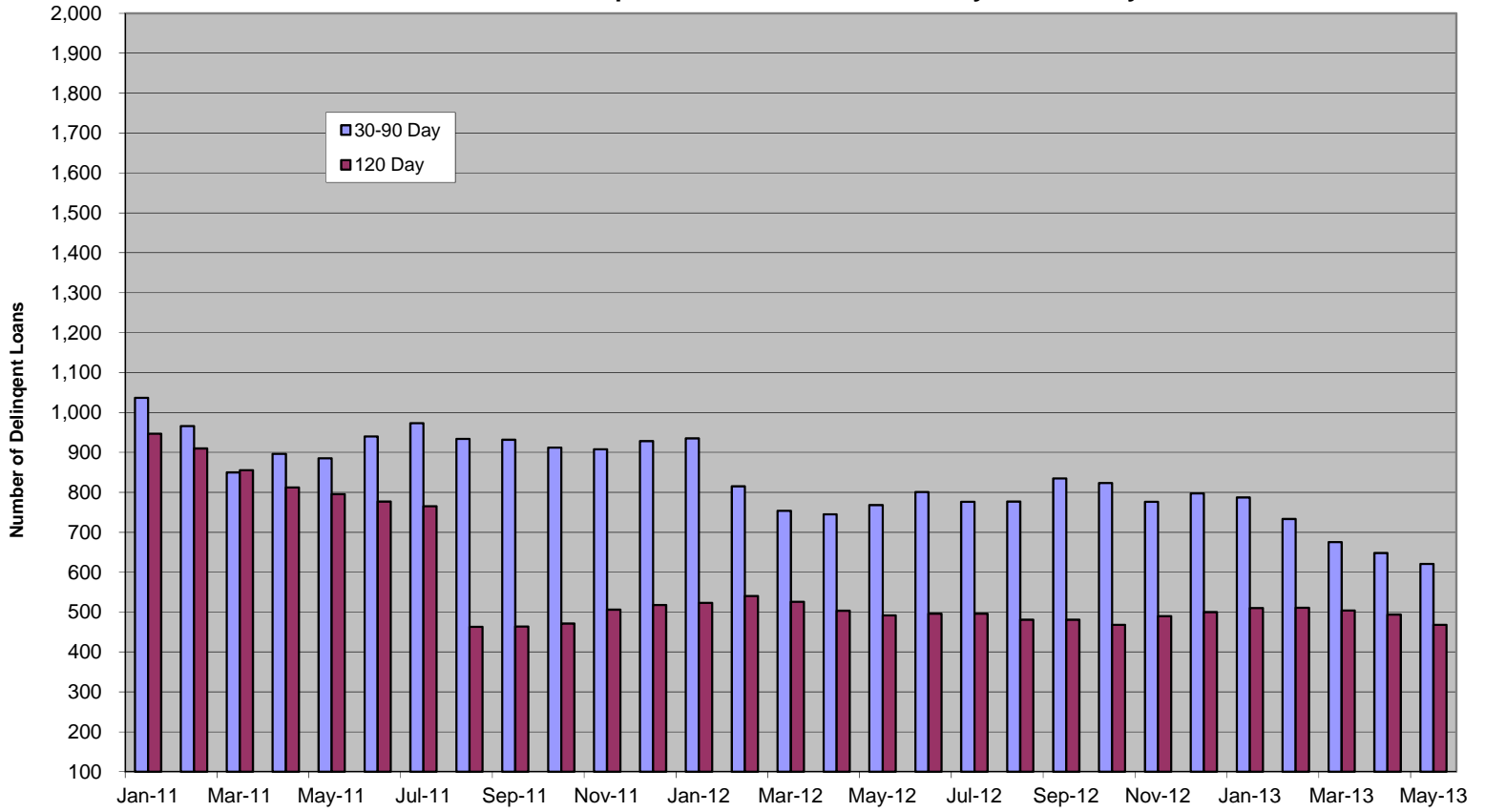
**Reconciled Loan Delinquency Summary
All Active Loans By Servicer
As of May 31, 2013**

	Loan Count	Balance	% of Balance	DELINQUENCY RATIOS - % of Loan Count						Totals	
				Loan Count	30-Day	Loan Count	60-Day	Loan Count	90(+)-Day	Count	%
CALHFA - LOAN SERVICING	6,941	\$ 1,462,626,622	46.71%	174	2.51%	76	1.09%	468	6.74%	718	10.34%
GUILD MORTGAGE	4,347	685,239,500	21.88%	215	4.95%	66	1.52%	200	4.60%	481	11.07%
BAC HOME LOANS SERVICING, LP	1,981	349,193,029	11.15%	90	4.54%	35	1.77%	340	17.16%	465	23.47%
WELLS FARGO HOME MORTGAGE	1,980	211,128,023	6.74%	77	3.89%	31	1.57%	142	7.17%	250	12.63%
EVERHOME MORTGAGE COMPANY	1,792	156,876,333	5.01%	93	5.19%	16	0.89%	82	4.58%	191	10.66%
GMAC MORTGAGE CORP	781	96,969,658	3.10%	26	3.33%	24	3.07%	46	5.89%	96	12.29%
FIRST MORTGAGE CORP	694	128,259,348	4.10%	22	3.17%	8	1.15%	52	7.49%	82	11.82%
JPMORGAN CHASE BANK, N.A.	140	30,803,620	0.98%	1	0.71%	3	2.14%	20	14.29%	24	17.14%
CITIMORTGAGE, INC.	40	8,817,921	0.28%	1	2.50%	2	5.00%	6	15.00%	9	22.50%
DOVENMUEHLE MORTGAGE, INC.	36	1,028,665	0.03%	0	0.00%	0	0.00%	0	0.00%	0	0.00%
WESCOM CREDIT UNION	2	488,321	0.02%	0	0.00%	0	0.00%	0	0.00%	0	0.00%
Total CalHFA	18,734	\$ 3,131,431,040	100.00%	699	3.73%	261	1.39%	1,356	7.24%	2,316	12.36%

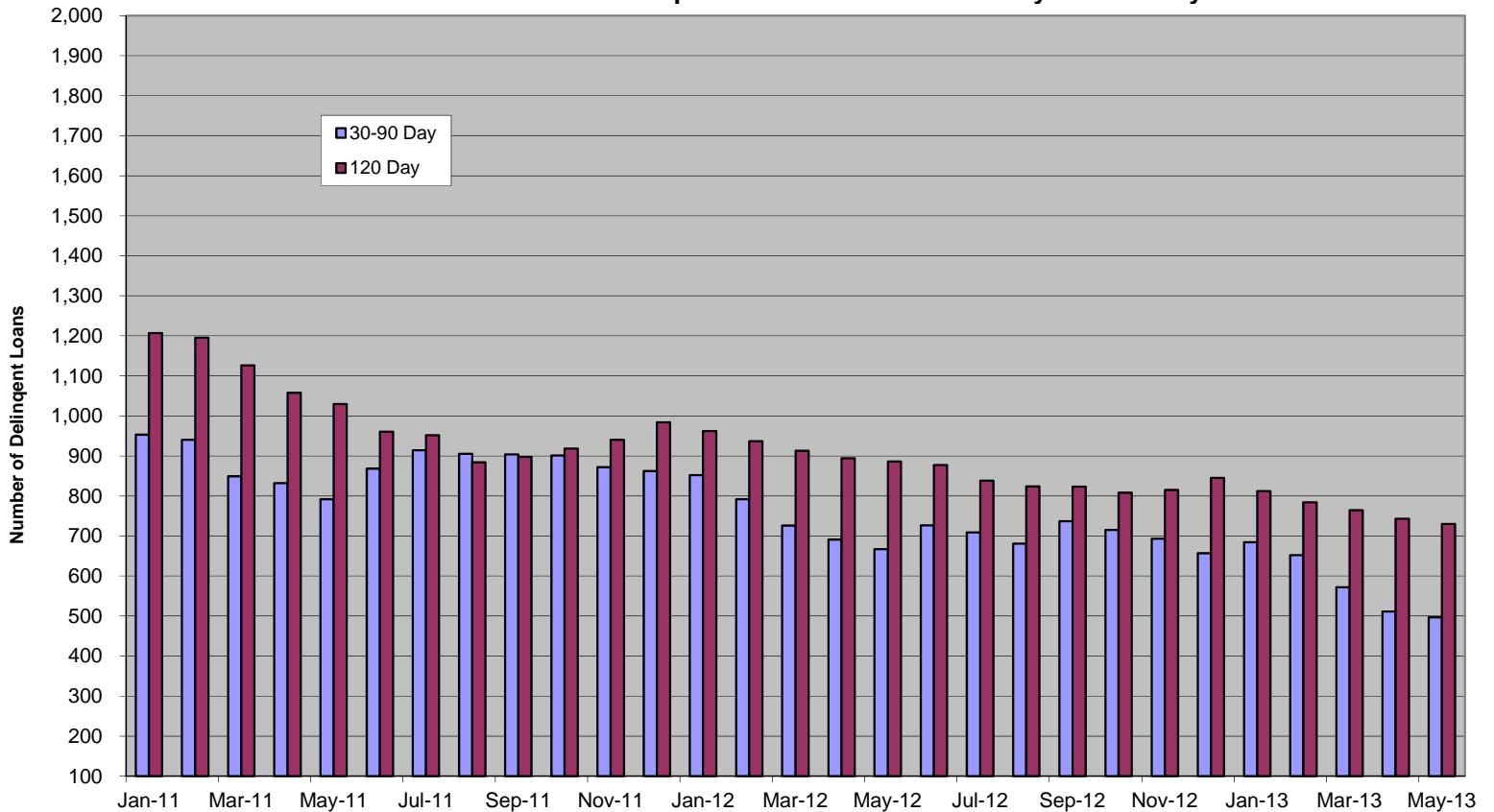
**Reconciled Loan Delinquency Summary
All Active Loans By County
As of May 31, 2013**

	Loan Count	Balance	% of Balance	DELINQUENCY RATIOS - % of Loan Count						Total	
				Loan Count	30-Day	Loan Count	60-Day	Loan Count	90-Day+	Count	%
LOS ANGELES	3,107	\$ 614,004,959	19.61%	112	3.60%	53	1.71%	260	8.37%	425	13.68%
SAN DIEGO	1,608	325,721,983	10.40%	41	2.55%	24	1.49%	145	9.02%	210	13.06%
SANTA CLARA	1,269	312,825,081	9.99%	19	1.50%	5	0.39%	56	4.41%	80	6.30%
KERN	1,189	116,035,199	3.71%	56	4.71%	25	2.10%	67	5.63%	148	12.45%
FRESNO	994	82,788,365	2.64%	58	5.84%	13	1.31%	52	5.23%	123	12.37%
TULARE	983	82,101,510	2.62%	48	4.88%	18	1.83%	51	5.19%	117	11.90%
ORANGE	881	188,580,389	6.02%	17	1.93%	10	1.14%	69	7.83%	96	10.90%
SACRAMENTO	868	142,047,070	4.54%	33	3.80%	11	1.27%	91	10.48%	135	15.55%
SAN BERNARDINO	855	131,215,551	4.19%	41	4.80%	15	1.75%	89	10.41%	145	16.96%
RIVERSIDE	848	124,575,911	3.98%	58	6.84%	20	2.36%	92	10.85%	170	20.05%
ALAMEDA	824	187,171,337	5.98%	10	1.21%	3	0.36%	41	4.98%	54	6.55%
CONTRA COSTA	653	134,622,912	4.30%	20	3.06%	9	1.38%	54	8.27%	83	12.71%
IMPERIAL	471	44,268,598	1.41%	30	6.37%	8	1.70%	28	5.94%	66	14.01%
VENTURA	465	116,171,075	3.71%	14	3.01%	5	1.08%	31	6.67%	50	10.75%
SONOMA	383	73,551,535	2.35%	12	3.13%	2	0.52%	18	4.70%	32	8.36%
OTHER COUNTIES	3,336	455,749,565	14.55%	130	3.90%	40	1.20%	212	6.35%	382	11.45%
Total CalHFA	18,734	\$ 3,131,431,040	100.00%	699	3.73%	261	1.39%	1,356	7.24%	2,316	12.36%

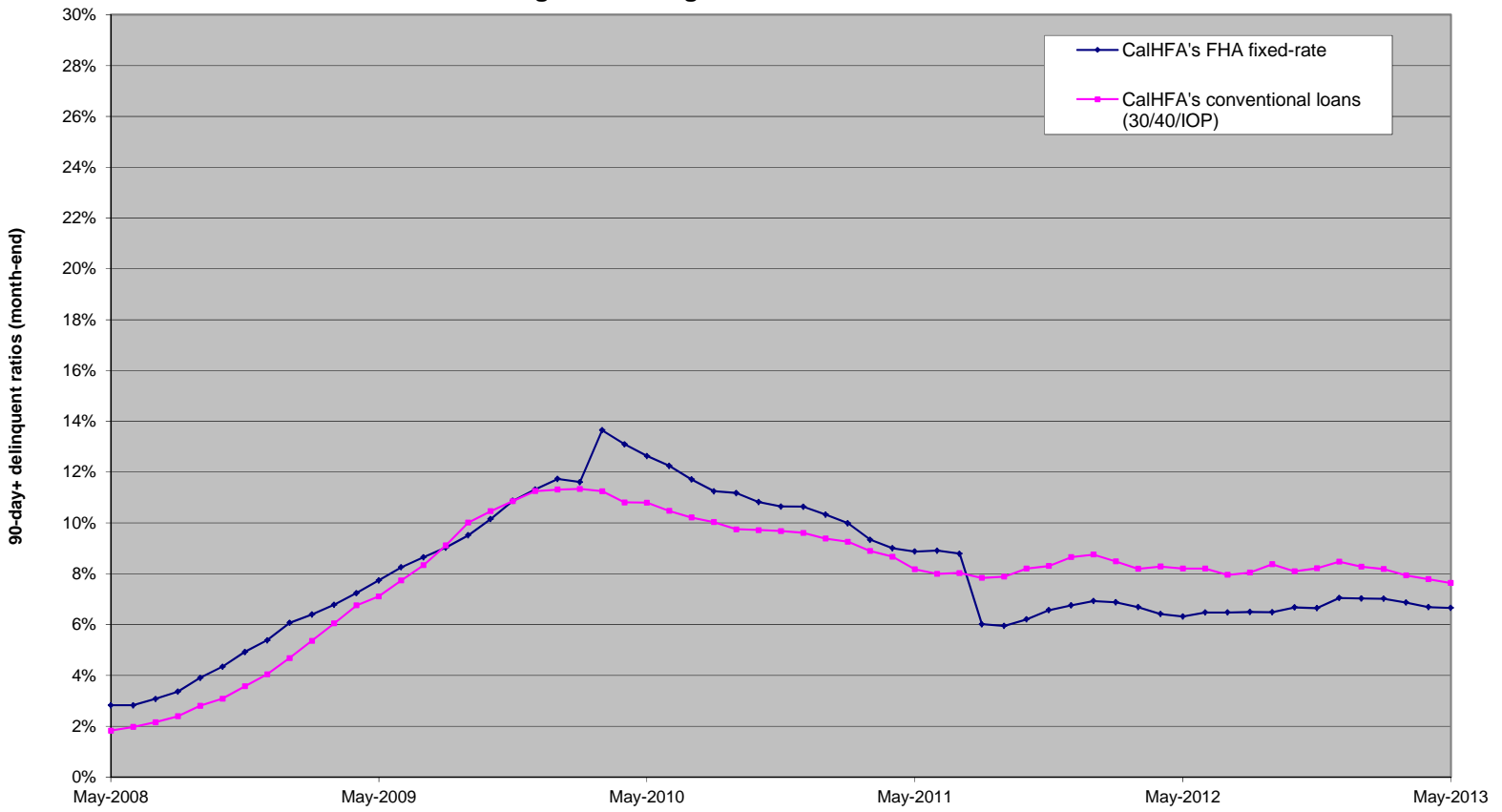
CalHFA's FHA Delinquent Loan Trend for 30-90 Day and 120 Day



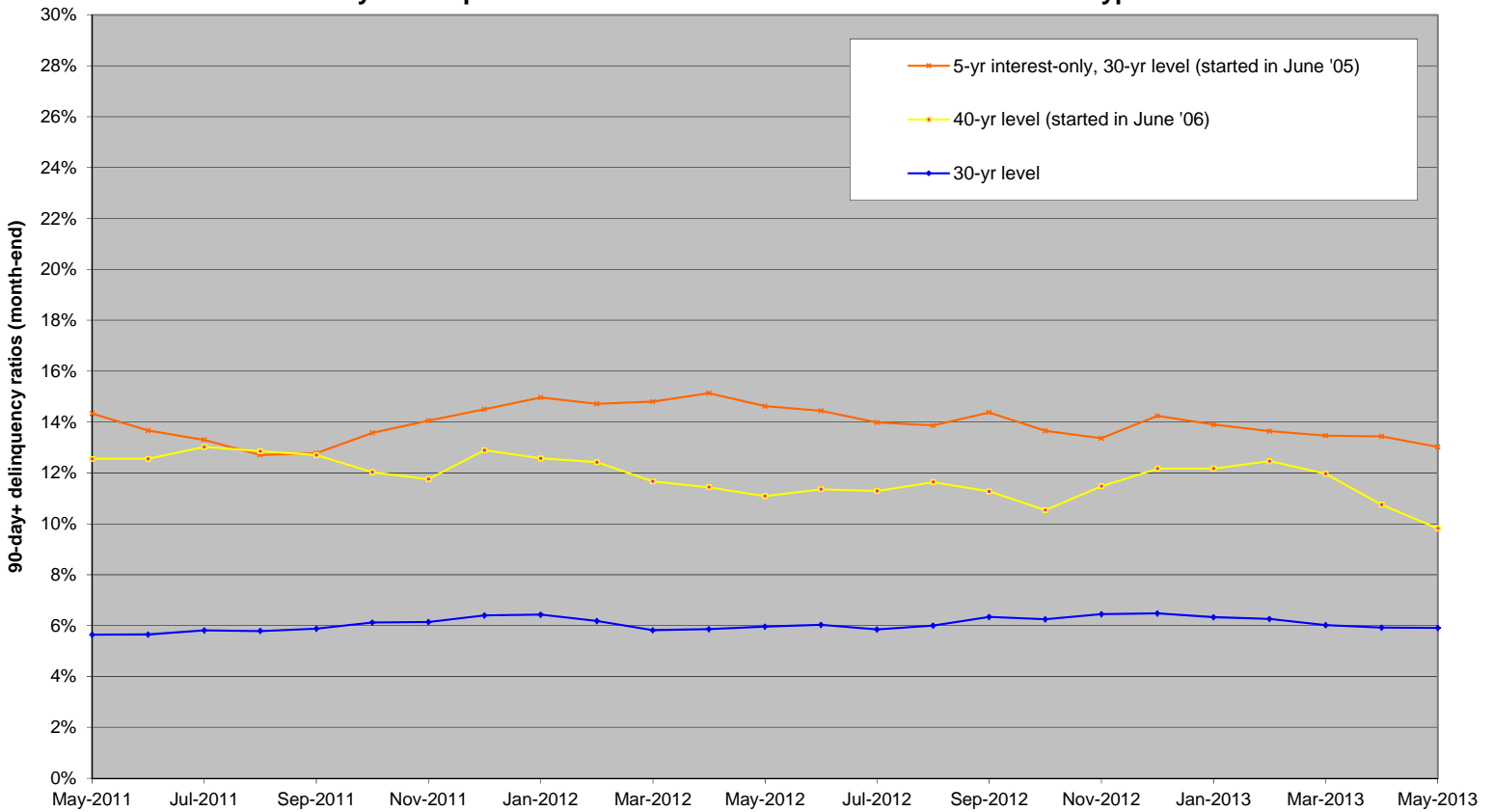
CalHFA's Conventional Delinquent Loan Trend for 30-90 Day and 120 Day



**90 day+ delinquent ratios for CalHFA's FHA
and weighted average of all Conventional Loans**



90 day+ delinquent ratios for CalHFA's Three Conventional Loan Types



Real Estate Owned

Calendar Year 2013 (As of June 30, 2013)												
Loan Type	Beginning Balance # of Loans	Prior Calendar Adj.	**Trustee Sales			Disposition of REO(s)					Ending Balance # of Loans	UPB of REO's Owned
			Reverted to CalHFA Jan-May	Reverted to CalHFA June	Total Trustee Sales	Repurchased by Lender Jan-May	Market Sale(s) Jan-May	Repurchased by Lender June	Market Sale(s) June	Total Disposition of REO(s)		
FHA/RHS/VA	45	(1)	52	13	65	69		10		79	30	\$ 5,186,484
Conventional	161	1	134	15	149		177		32	209	102	23,537,793
Total	206	0	186	28	214	69	177	10	32	288	132	\$ 28,724,278

Calendar Year 2012							
Loan Type	Beginning Balance # of Loans	Prior Calendar Adj.	*Trustee Sales	Disposition of REO(s)		Ending Balance # of Loans	UPB of REO's Owned
			Reverted to CalHFA 2012	Repurchased by Lender 2012	Market Sale(s) 2012		
FHA/RHS/VA	124	(18)	312	373		45	\$ 7,884,581
Conventional	565	3	786		1,193	161	40,029,375
Total	689	(15)	1,098	373	1,193	206	\$ 47,913,957

Calendar Year 2011						
Loan Type	Beginning Balance # of Loans	*Trustee Sales	Disposition of REO(s)		Ending Balance # of Loans	UPB of REO's Owned
		Reverted to CalHFA 2011	Repurchased by Lender 2011	Market Sale(s) 2011		
FHA/RHS/VA	198	496	570		124	\$ 22,948,976
Conventional	1084	1311		1830	565	123,482,821
Total	1282	1807	570	1830	689	\$ 146,431,797

Calendar Year 2010						
Loan Type	Beginning Balance # of Loans	*Trustee Sales	Disposition of REO(s)		Ending Balance # of Loans	UPB of REO's Owned
		Reverted to CalHFA 2010	Repurchased by Lender 2010	Market Sale(s) 2010		
FHA/RHS/VA	187	816	805		198	\$ 41,905,865
Conventional	619	1551		1086	1084	226,793,920
Total	806	2367	805	1086	1282	\$ 268,699,784

*3rd party trustee sales are not shown in the tables (title to these loans were never transferred to CalHFA). There were eight (8) 3rd party sales in calendar year 2008, eighteen (18) 3rd party sales year 2009, thirty-nine (39) 3rd party sales year 2010, twenty two (22) 3rd party sales in calendar year 2011, forty one (41) 3rd party sales in calendar year 2012, and there are thirty-one (31) 3rd party sales to date 2013.

Accumulated Uninsured Losses as of June 30, 2013						
Conventional Loans	# of Properties Sold	Principal Write-Offs ⁽¹⁾	# of GAP Claims	Actual GAP ⁽²⁾ Claim Payments	# of Subordinate Loans	Subordinate Write-Offs ^{(3) & (4)}
REOs Sold	4,914	\$ (181,406,701)	2,601	\$ (117,367,774)		
Short Sales	1,214	(53,576,596)	395	(17,461,359)	1,887	\$ (16,704,605)
3rd Party Sales	72	(196,576)	4	(170,867)	55	(541,405)
Write-offs resulting from foreclosures					8,054	(74,146,581)
Subordinate loan without CalHFA 1st					1,796	(12,895,227)
Total:	6,200	\$ (235,179,874)	3,000	\$ (135,000,000)	11,792	\$ (104,287,819)

(1) Principal loan write-offs from January 1, 2008. Does not include allowance for loan losses or loan loss reserves.

(2) The California Housing Loan Insurance Fund (the MI FundTM) provided GAP insurance to meet HMRB bond indenture requirements that all loans held within that indenture have 50% of the unpaid principal balance insured by a mortgage insurance policy for the life of the loan. The insurance may be provided by any combination of government insurance, private mortgage insurance, or a policy from the MI fund. The Agency agreed, pursuant to an internal interfund agreement, to indemnify the MI Fund for claims paid for principal losses under the GAP insurance policy, up to a cumulative maximum amount of \$135 million, this maximum amount was reached in August 2011. The indemnification is payable solely from available funds held in a sub account within the California Housing Finance Fund.

(3) Includes both FHA/Conventional Loans.

(4) Prior to May 1, 2013 this chart included losses on non-CalHFA FNMA subordinate loans serviced by CalHFA loan servicing.

**2013 Year to Date Composition of 1st Trust Deed Loss
(As of June 30, 2013)**

Loan Type	Disposition				Principal Write-Offs
	Repurchased by Lender	Market Sales	Short Sales	Loan Balance at Sales	
FHA/RHS/VA	79		40	\$ 22,566,201	
Conventional		209	227	115,900,628	\$ (21,301,148)
	79	209	267	\$ 138,466,829	\$ (21,301,148)

**2013 Year to Date Composition of Subordinate Write-Offs by Loan Type⁽¹⁾
(As of June 30, 2013)**

Loan Type	Active Loans		Write-Offs with CalHFA 1st		Write-Offs w/o CalHFA 1st		Total	
	Active Loans	Dollar Amount	Number of Write-Offs	Dollar Amount	Number of Write-Offs	Dollar Amount	Number of Write-Offs	Dollar Amount
CHAP/HHPA (HiCAP)	7,374	\$78,267,377	242	\$2,393,456	5	\$ 39,850.00	247	\$2,433,306
CHDAP / ECTP (THPA) / HiRAP	26,810	189,955,663	277	2,211,503	163	974,384	440	3,185,886
Other ⁽²⁾	214	2,839,039	0	0	0	0	0	0
	34,398	\$271,062,080	519	\$4,604,959	168	\$1,014,234	687	\$5,619,192

(1) Does not include FNMA and CalSTRS subordinates (non-agency loans serviced by in house loan servicing)

(2) Includes HPA, MDP, OHPA, and SSLP.